

PRODUCT INFORMATION PACKET

marathon®
Motors

Model No: 056E17F2007
Catalog No: Z614
1.50 HP SCR Motor, 1750 RPM, 180 V, 56C Frame, TEFC
SCR Motors



Regal and Marathon are trademarks of Regal Rexnord Corporation or one of its affiliated companies.
©2021 Regal Rexnord Corporation, All Rights Reserved. MC017097E

RegalRexnord

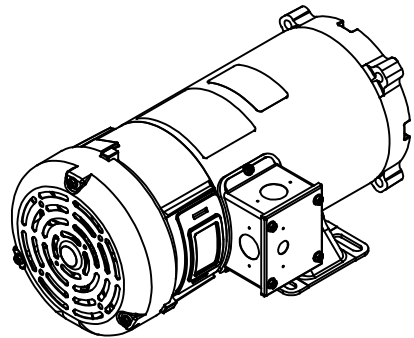
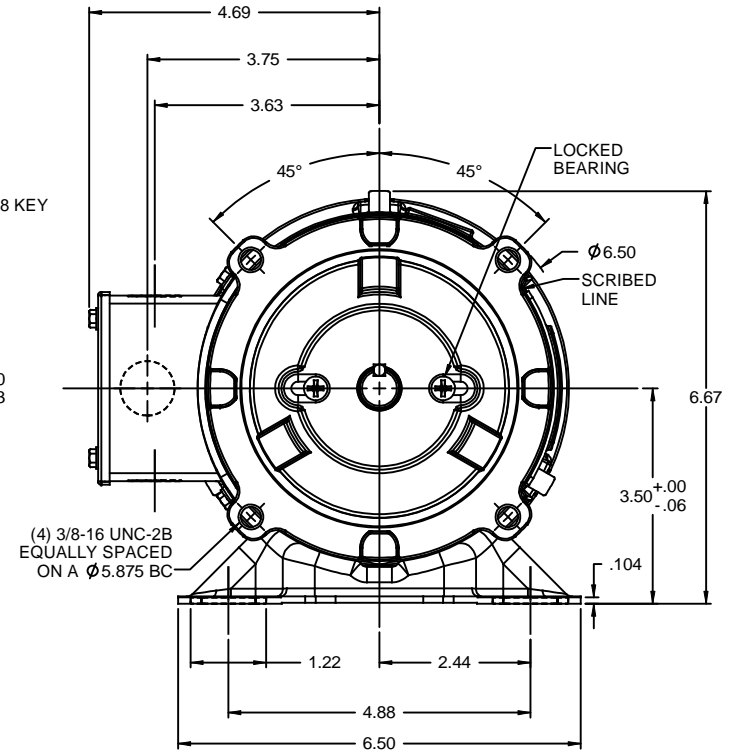
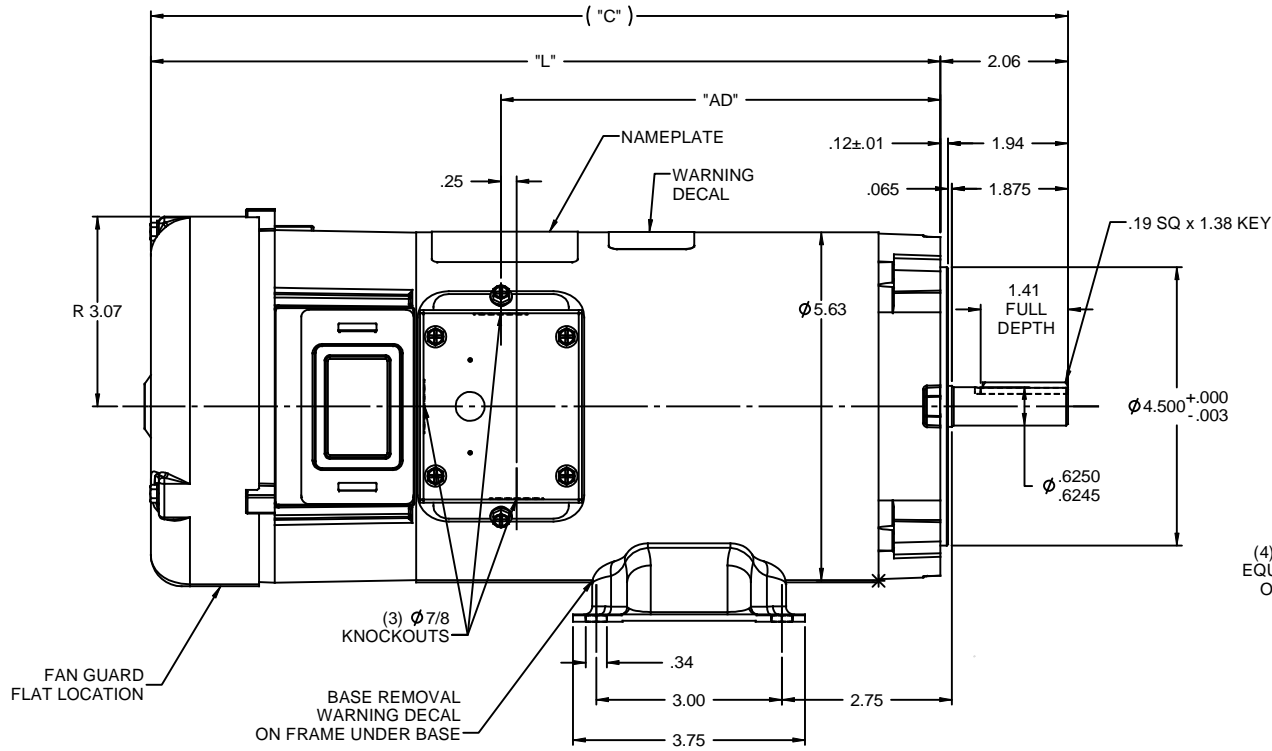
Nameplate Specifications

Output HP	1.50 Hp	Output KW	1.1 kW
Voltage	180 V	Current	7.6 A
Speed	1750 rpm	Service Factor	1
Efficiency	86.5 %	Duty	Continuous
Insulation Class	F	Frame	S56C
Enclosure	Totally Enclosed Fan Cooled	Thermal Protection	No
Ambient Temperature	40 °C	Drive End Bearing Size	6203
Opp Drive End Bearing Size	6203	UL	Recognized
CSA	Y	CE	N
Number of Speeds	1		

Technical Specifications

Rotation	Reversible	Mounting	Rigid C base
Overall Length	16.82 in	Frame Length	9.47 in
Shaft Diameter	0.625 in	Shaft Extension	1.94 in
Torque	54 LB-IN		
Outline Drawing	031903-947	Connection Drawing	00531901

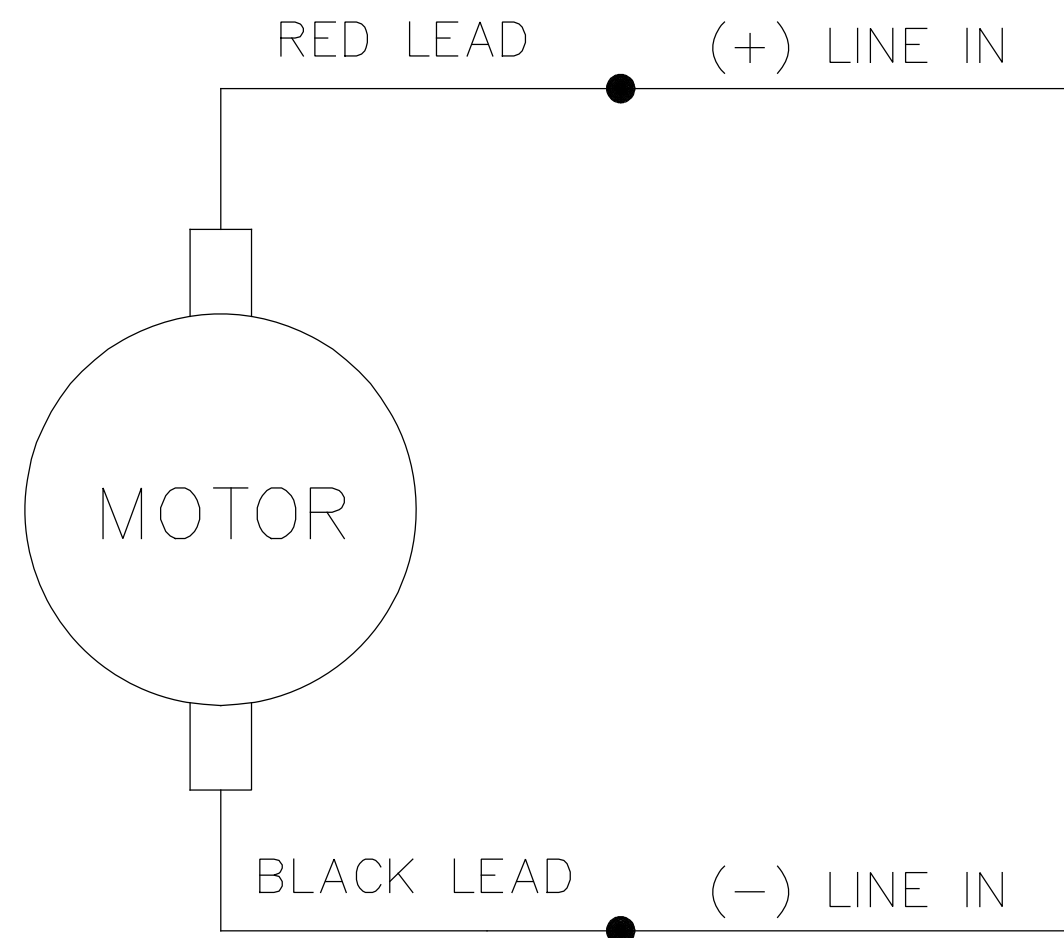
This is an uncontrolled document once printed or downloaded and is subject to change without notice. Date Created:10/12/2021



056E17F2007	16.82	14.76	9.10	180	1 1/2	1750
056E17F2006	14.82	12.76	7.10	180	1	1750
056E17F2005	14.82	12.76	7.10	90	1	1750
CATALOG No.	"C"	"L"	"AD"	VOLTS	H.P.	RPM

- NOTES:
 1) MAXIMUM FACE RUNOUT .004 T.I.R.
 2) MAXIMUM PILOT ECCENTRICITY .004 T.I.R.
 3) PERMISSIBLE SHAFT RUNOUT .002 T.I.R.
 4) GASKETS THROUGHOUT

				TOLERANCES UNLESS SPECIFIED		DRAWN		IPG 5/9/08	
02	ADDED NOTE ABOUT FAN GUARD FLAT LOCATION. ISAAC	IPG	12/9/2009	DEC	INCHES	MARATHON ELECTRIC		CHK	BC 5/9/08
	09-4813			X	±.1			APPR	
01	CAT. #: 056E17F2007: "C" WAS 17.32, "L" WAS 15.26, "AD" WAS 9.60. ISAAC	IPG	5/14/2009	SK	XX ±.03	TITLE OUTLINE		SCALE	1:2
	RELEASED	IPG	5/9/2008	BC	XXX ±.005	48 FRAME DC - S56C MOUNT		REF	031879
				BC	XXX ±.0005	MATL		FMF	056E17F2005.00
NO	REVISION	BY & DATE	CHK	ANG	±1/2"	FINISH		PAGE	OF
	THIRD ANGLE PROJECTION		RFP			PREV		SIZE	DRAWING NO
						NETWORK FILE NAME		B	031903
								REV	02



CONNECTIONS SHOWN FOR CCW ROTATION FACING LEAD END OF THE MOTOR
TO REVERSE ROTATION INTERCHANGE LINE LEADS

NO.	REVISION	BY & DATE	CHK	TOLERANCES UNLESS SPECIFIED		LEESON	ELECTRIC MOTORS GEARMOTORS AND DRIVES	DRAWN TJF 11/15/97	
				DEC.	INCHES				CHK
				.X	±.1			APPD POW 11/15/97	
E	"MOTOR" WAS "ARMATURE", ECO-0163602	IPG 3/14/19		.XX	±.01	TITLE	EXTERNAL WIRING DIAGRAM PMDC MOTOR	SCALE 1=2	
D	UPDATED TO MAKE IT GENERIC, ECO-0163547	IPG 3/13/19		.XXX	±.005			REF	
01	REDRAWN ON CAD. REVISED NOTES.	SJB 9/20/2005		.XXXX	±.0005	MAT'L.		FMF	
				ANG	±1/2°	FINISH		PREV	
THIS DRAWING IN DESIGN AND DETAIL IS OUR PROPERTY AND MUST NOT BE USED EXCEPT IN CONNECTION WITH OUR WORK ALL RIGHTS OF DESIGN AND INVENTION ARE RESERVED THIS IS AN ELECTRONICALLY GENERATED DOCUMENT - DO NOT SCALE THIS PRINT				RFP	CAD FILE 00531901		SIZE A	DRAWING NO. 005319.01	REV. E
				DIST					