

# PRODUCT INFORMATION PACKET

**marathon®**  
Motors

Model No: 080T11FH5512

Catalog No: R391

Globetrotter® IEC Aluminium Motor, 0.75 & 0.75 HP, 3 Ph, 60 & 50 Hz, 230/460 & 200/400 V,  
1200 & 1000 RPM, 80 Frame, TEFC



Regal and Marathon are trademarks of Regal Rexnord Corporation or one of its affiliated companies.

©2023 Regal Rexnord Corporation, All Rights Reserved. MC017097E

**RegalRexnord®**

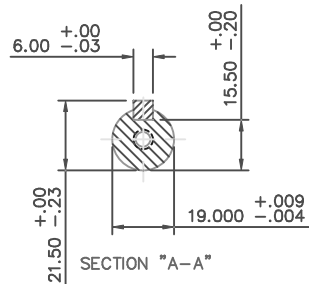
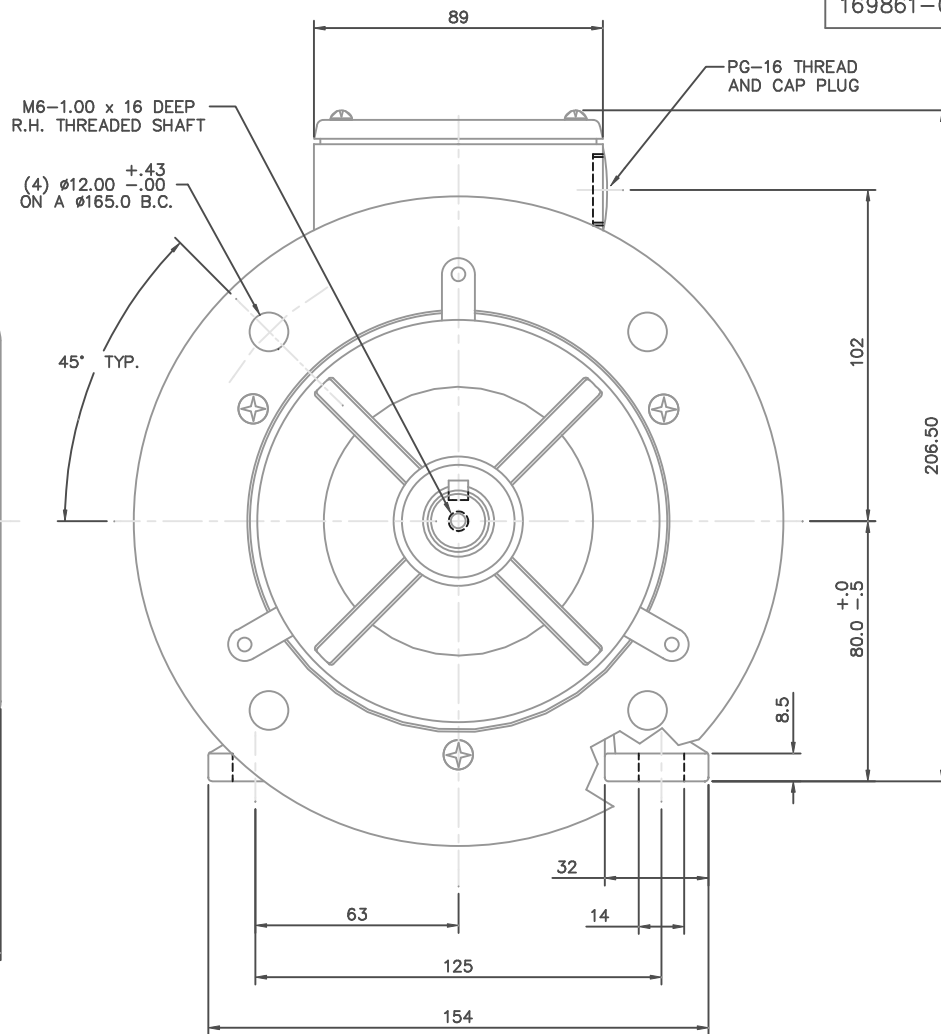
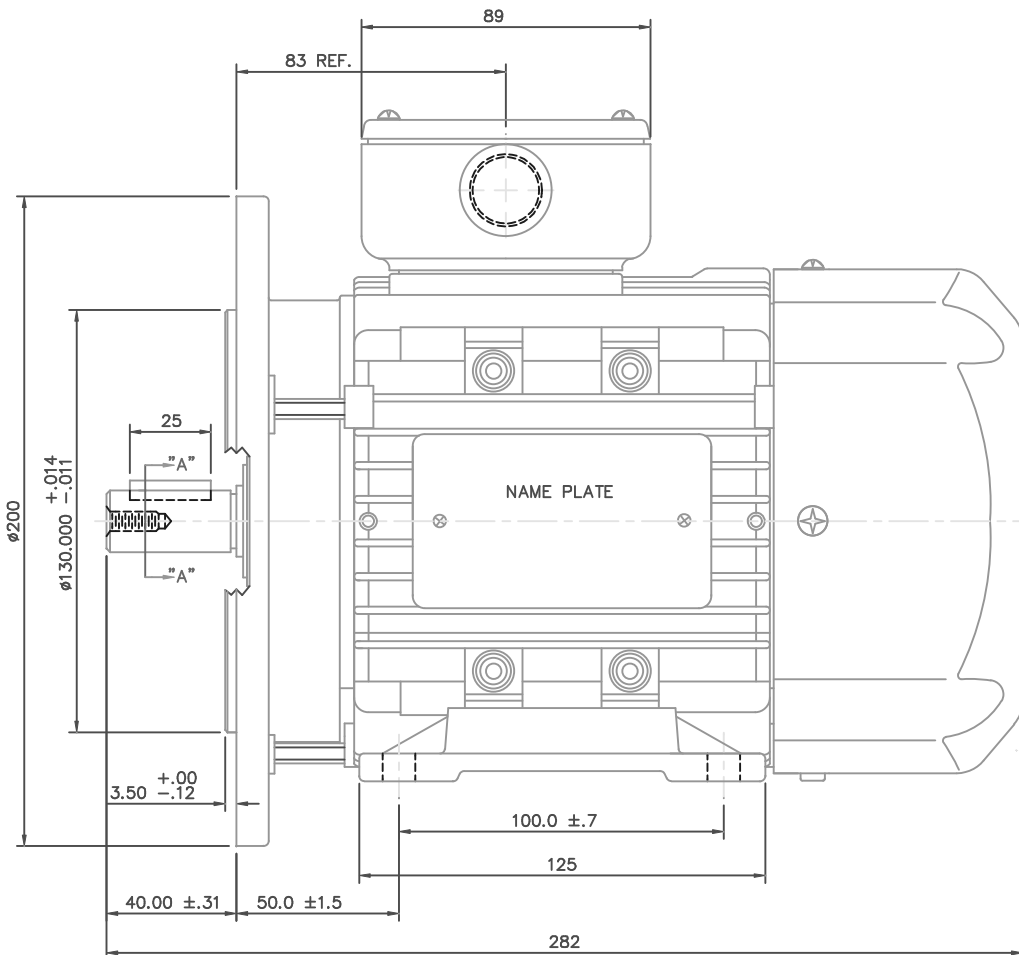
### Nameplate Specifications

Phase	<b>3</b>	Output HP	<b>0.75 &amp; 0.75 Hp</b>
Output KW	<b>0.56 &amp; 0.56 kW</b>	Voltage	<b>230/460 &amp; 200/400 V</b>
Speed	<b>1130 &amp; 910 rpm</b>	Service Factor	<b>1.15 &amp; 1.15</b>
Frame	<b>80</b>	Enclosure	<b>Totally Enclosed Fan Cooled</b>
Thermal Protection	<b>No Protection</b>	Efficiency	<b>72 &amp; 68 %</b>
Ambient Temperature	<b>40 °C</b>	Frequency	<b>60 &amp; 50 Hz</b>
Current	<b>2.7/1.35 &amp; 3.0/1.5 A</b>	Power Factor	<b>72</b>
Duty	<b>Continuous</b>	Insulation Class	<b>F</b>
Design Code	<b>B</b>	KVA Code	<b>H</b>
Drive End Bearing Size	<b>6204</b>	Opp Drive End Bearing Size	<b>6204</b>
UL	<b>Recognized</b>	CSA	<b>Y</b>
CE	<b>Y</b>	IP Code	<b>55</b>
Number of Speeds	<b>1</b>		

### Technical Specifications

Electrical Type	<b>Squirrel Cage Inverter Rated</b>	Starting Method	<b>Line Or Inverter</b>
Poles	<b>6</b>	Rotation	<b>Reversible</b>
Resistance Main	<b>7.64 Ohms</b>	Mounting	<b>Rigid Base</b>
Motor Orientation	<b>Horizontal</b>	Drive End Bearing	<b>Ball</b>
Opp Drive End Bearing	<b>Ball</b>	Frame Material	<b>Aluminum</b>
Shaft Type	<b>IEC</b>	Overall Length	<b>11.10 in</b>
Frame Length	<b>5.31 in</b>	Shaft Diameter	<b>0.750 in</b>
Shaft Extension	<b>1.57 in</b>	Assembly/Box Mounting	<b>F3</b>
Inverter Load	<b>CONSTANT 20:1</b>		
Outline Drawing	<b>16986900ME</b>	Connection Drawing	<b>00546501ME</b>





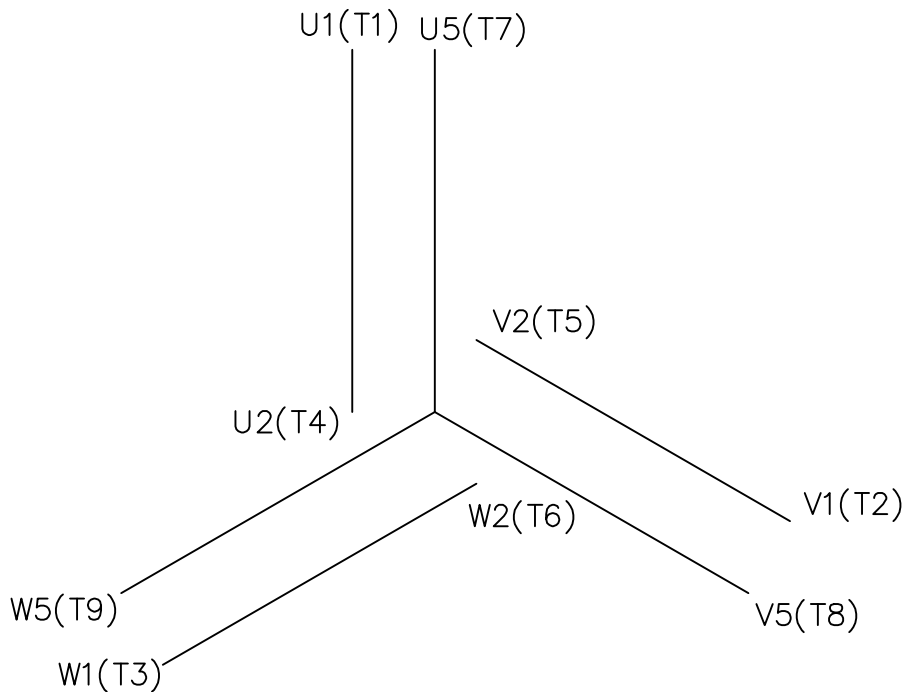
NO.		REVISION	BY & DATE	CHK	ANG	±1/2"	FINISH	PREV			
THIS DRAWING IN DESIGN AND DETAIL IS OUR PROPERTY AND MUST NOT BE USED EXCEPT IN CONNECTION WITH OUR WORK. ALL RIGHTS OF DESIGN AND INVENTION ARE RESERVED. THIS IS AN ELECTRONICALLY GENERATED DOCUMENT - DO NOT SCALE THIS PRINT				RFP			CAD FILE	16986900me	SIZE	DRAWING NO.	REV.
				DIST					B	169861-00ME	

TOLERANCES UNLESS SPECIFIED		DRAWN CTO 07-07-2004	
DEC.	INCHES	CHK	APPD
.X	±.1		
.XX	±.03		
.XXX	±.005		
.XXXX	±.0005		

		TITLE METRIC OUTLINE, IMB35 IEC-80 FRAME TEFC RIGID W/B5 FLANGE		SCALE 1=1.5
		MAT'L ALUMINUM		REF OSVC-300-552



REF. DECAL (IEC) 080644  
REF. DECAL (NEMA) 080446

IEC MARKINGS

LOW VOLTAGE				HIGH VOLTAGE		
LINE VOLTAGE	L1	L2	L3	JOIN		
TERMINAL	U1	V1	W1	W2	U2	V2
LOW	U1,U5	V1,V5	W1,W5	---	U2,V2,W2	---
HIGH	U1	V1	W1	U2,U5	V2,V5	W2,W5

NEMA MARKINGS

LOW VOLTAGE				HIGH VOLTAGE		
LINE VOLTAGE	L1	L2	L3	JOIN		
TERMINAL	U1	V1	W1	W2	U2	V2
LOW	T1, T7	T2, T8	T3, T9	---	T4,T5,T6	---
HIGH	T1	T2	T3	T4, T7	T5, T8	T6, T9

		TOLERANCES UNLESS SPECIFIED				DRAWN JGO 3/10/04			
		DEC.	INCHES			CHK SB 02-17-2010			
		.X	±.1			APPD MJS 02-17-2010			
		.XX	±.01			SCALE 1=1			
		.XXX	±.005			REF			
		.XXXX	±.0005	MAT'L. IEC/NEMA MARKINGS		FMF			
NO.	REVISION	BY & DATE	CHK	ANG	±1/2'	FINISH	PREV		
THIS DRAWING IN DESIGN AND DETAIL IS OUR PROPERTY AND MUST NOT BE USED EXCEPT IN CONNECTION WITH OUR WORK ALL RIGHTS OF DESIGN AND INVENTION ARE RESERVED THIS IS AN ELECTRONICALLY GENERATED DOCUMENT - DO NOT SCALE THIS PRINT			RFP	02-17-2010	CAD FILE	00546501ME	SIZE A	DRAWING NO. 005465ME-01	REV.

CERTIFICATION DATA SHEET

Model#: 80T11FH5512 A  
 CONN. DIAGRAM: 00546501ME  
 OUTLINE: 16986900ME

WINDING#: QT8063 FR 3  
 ASSEMBLY: F3

TYPICAL MOTOR PERFORMANCE DATA

HP	KW	SYNC. RPM	F.L. RPM	FRAME	ENCLOSURE	KVA CODE	DESIGN		
3/4&3/4	.56&.56	1200	1130&910	80	TEFC	H	B		
PH	Hz	VOLTS	FL AMPS	START TYPE	DUTY	INSL	S.F	AMB°C	ELEVATION
3	60/50	230/460#200/ 400	2.7/1.35&3.0/1 .5	LINE OR INVERTER	CONTINUOU S	F5	1.15/1.15	40	3300
FULL LOAD EFF: 72		3/4 LOAD EFF: 73.9	1/2 LOAD EFF: 70.8	GTD. EFF		ELEC. TYPE		NO LOAD AMPS	
FULL LOAD PF: 72		3/4 LOAD PF: 58.4	1/2 LOAD PF: 45.4	0		SQ CAGE INV RATED		2 / 1	
F.L. TORQUE		LOCKED ROTOR AMPS		L.R. TORQUE		B.D. TORQUE		F.L. RISE°C	
54 LB-FT		12.4 / 6.2		115 LB-FT 213		150 LB-FT 278		41	
SOUND PRESSURE @ 3 FT.	SOUND POWER	ROTOR WK^2	MAX. WK^2	SAFE STALL TIME	STARTS /HOUR	APPROX. MOTOR WGT			
0 dBA	10 dBA	0 LB-FT^2	0 LB-FT^2	0 SEC.	0	- LBS.			

\*\*\* SUPPLEMENTAL INFORMATION \*\*\*

DE BRACKET TYPE	ODE BRACKET TYPE	MOUNT TYPE	ORIENTATION	SEVERE DUTY	HAZARDOUS LOCATION	DRIP COVER	SCREENS	PAINT
B5	STANDARD	RIGID	HORIZONTAL	FALSE	NONE	FALSE	NONE	BLUE (ENAMEL)
BEARINGS		GREASE	SHAFT TYPE	SPECIAL DE	SPECIAL ODE	SHAFT MATERIAL	FRAME MATERIAL	
DE	OPE							
BALL	BALL							POLYREX EM
6204	6204							
THERMO-PROTECTORS				THERMISTORS		CONTROL		SPACE /n HEATERS
THERMOSTATS	PROTECTORS	WDG RTDs	BRG RTDs					
NONE	NOT	NONE	NONE	NONE		FALSE		NONE VOLTS

If Inverter equals NONE, contact factory for further information

\*  
N  
O  
T  
E  
S  
\*

INVERTER TORQUE: CONSTANT 20:1
INV. HP SPEED RANGE: NONE
ENCODER: NONE
NONE NONE
NONE NONE PPR
BRAKE: NONE NONE
NONE P/N NONE
NONE NONE
NONE FT-LB NONE V NONE Hz

DATE: 06/28/2017 03:52:29 AM  
 FORM 3531 REV.3 02/07/99  
 \*\* Subject to change without notice.



**MARATHON ELECTRIC CORPORATION**  
TYPICAL PERFORMANCE CURVE for AC MOTOR

Customer

Curve at 460 Volts  
60 HZ  
0.75 HP

HP 0.75&0.75 PHASE 3

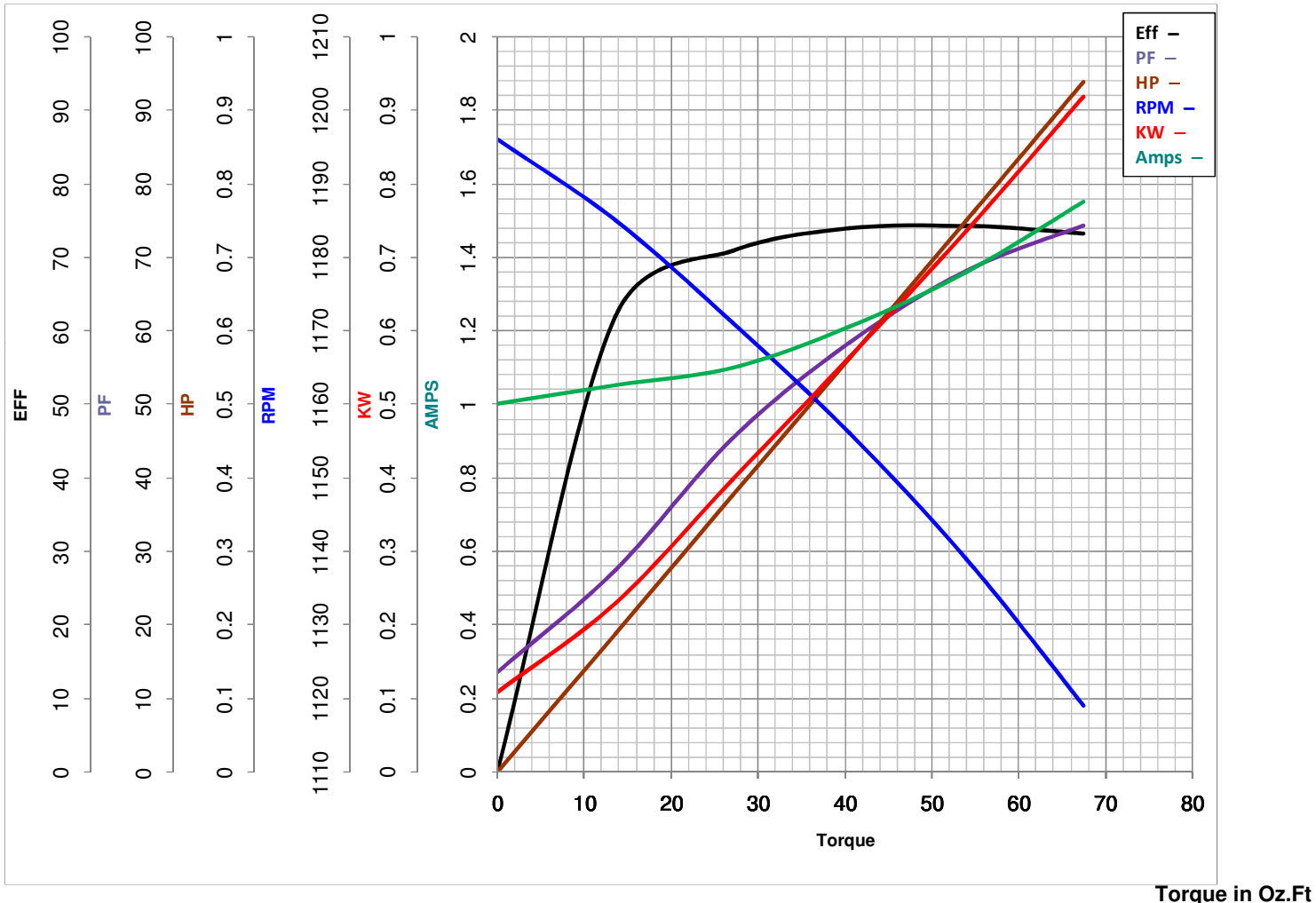
Model No 80T11FH5512

VOLTS 230/460&200/400

Catalog No R391

HZ 60&50

RPM 1130&910



FL TORQUE	<u>54</u>	Oz.Ft	FL AMPS	<u>2.7/1.35</u>
BD TORQUE	<u>150.0</u>	Oz.Ft	PU TORQUE	<u>104.0</u>
LR TORQUE	<u>115</u>	Oz.Ft	LR AMPS	<u>6.2</u>
WINDING	QT8063-		Date	

## EC Declaration of Conformity

The undersigned representing  
the manufacturer:

Regal Beloit America  
100 East Randolph St.  
Wausau, WI 54401

and the authorized representative  
established within the Community:

Marathon Electric UK  
6F Thistleton Road Ind. Estate  
Market Overton  
Oakham, Rutland LE15 7PP UK

are committed to providing customers with products that comply with applicable regulations and international protocols to which they are subject, including the requirements of the European Parliament Directive on the Harmonization of the laws relating to electrical equipment designed for use within certain voltage limits (2014/35/EU).

Regal Beloit America declares that the following product(s), to which this declaration relates, are in conformity with the relevant sections of the EC standards listed below.

This statement supersedes any statements previously issued pertaining to the product(s) listed below and is subject to change without notice.

Model No : 080T11FH5512

(Model No. may contain prefix and/or suffix characters)

Catalog No : R391

Rework No : N/A

Directives :

Low Voltage Directive 2014/35/EU

Harmonized Standards Used :

EN 60034-1: 2010 (IEC 60034-1: 2010)

EN 60034-5: 2001/A1:2007 (IEC 60034-5: 2000/A1:2006)

Authorized Representative:



Michael A. Logsdon  
Vice President, Technology

Authorized Representative in the Community:



Julian Clark  
Marketing Engineer

Created on 09/06/2022

**CE 22**