

# PRODUCT INFORMATION PACKET

Model No: 5K49JN4582  
Catalog No: K2102  
1/2, 1800, 56, 3/60/200, EPFC  
Explosion Proof



Regal and Marathon are trademarks of Regal Beloit Corporation or one of its affiliated companies.  
©2018 Regal Beloit Corporation, All Rights Reserved. MC017097E



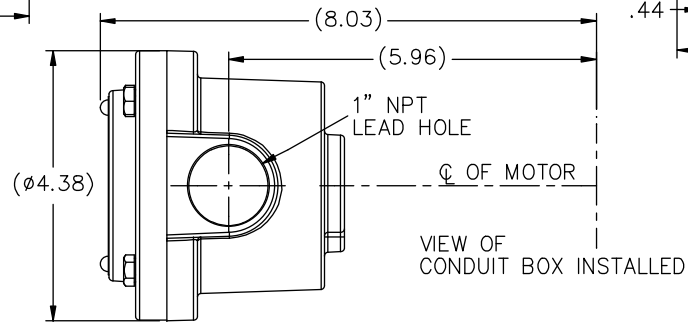
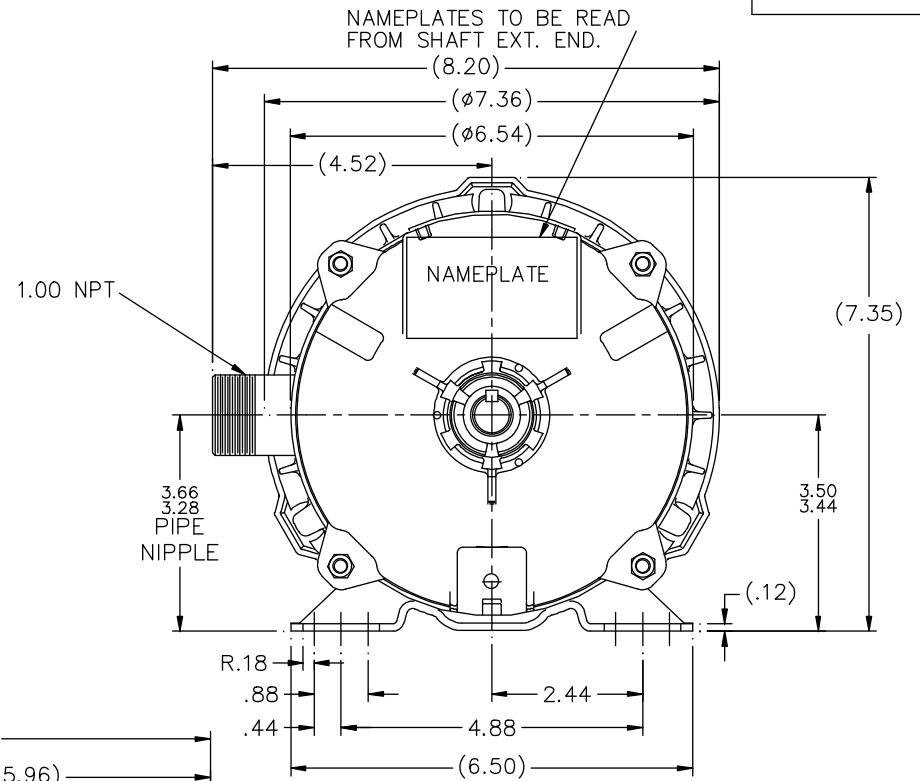
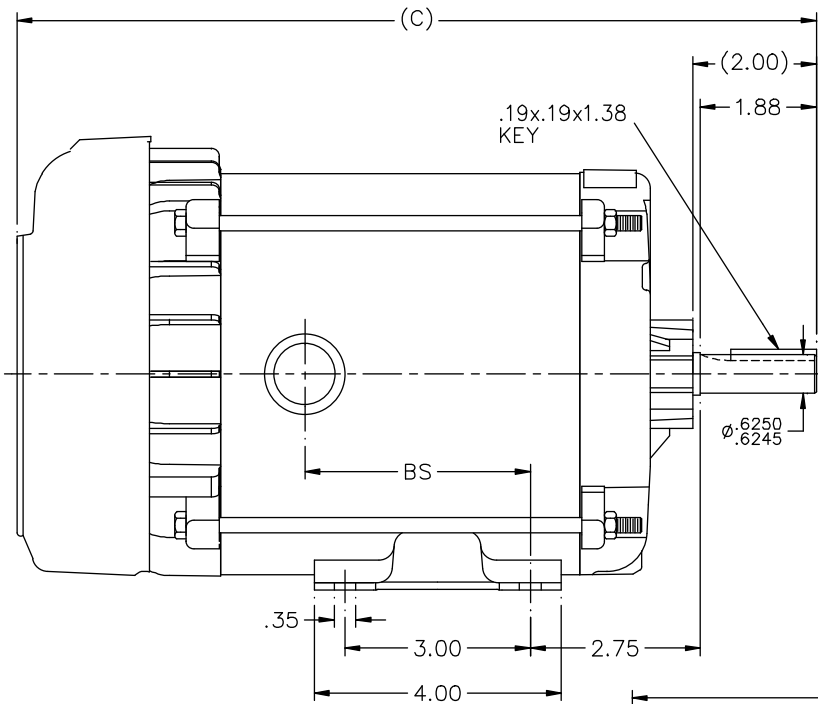
### Nameplate Specifications

Output HP	<b>0.50 Hp</b>	Output KW	<b>0.37 kW</b>
Frequency	<b>60 Hz</b>	Voltage	<b>200 V</b>
Current	<b>2.8 A</b>	Speed	<b>1725 rpm</b>
Service Factor	<b>1</b>	Phase	<b>3</b>
Efficiency	<b>68 %</b>	Duty	<b>Continuous</b>
Insulation Class	<b>B</b>	Design Code	<b>B</b>
KVA Code	<b>M</b>	Frame	<b>56</b>
Enclosure	<b>Explosion Proof Fan cooled</b>	Overload Protector	<b>Automatic</b>
Ambient Temperature	<b>40 °C</b>	Drive End Bearing Size	<b>6203</b>
Opp Drive End Bearing Size	<b>6203</b>	UL	<b>Recognized</b>
CSA	<b>N</b>	CE	<b>N</b>
IP Code	<b>54</b>		

### Technical Specifications

Electrical Type	<b>Squirrel Cage Induction Run</b>	Starting Method	<b>Across The Line</b>
Poles	<b>4</b>	Rotation	<b>Reversible</b>
Mounting	<b>Rigid base</b>	Motor Orientation	<b>Horizontal</b>
Drive End Bearing	<b>Ball</b>	Opp Drive End Bearing	<b>Ball</b>
Frame Material	<b>Rolled Steel</b>	Shaft Type	<b>T</b>
Overall Length	<b>13.94 in</b>	Frame Length	<b>6.81 in</b>
Shaft Diameter	<b>0.625 in</b>	Shaft Extension	<b>2 in</b>
Assembly/Box Mounting	<b>F1 Only</b>		
Outline Drawing	<b>B-104189GE-681</b>	Connection Diagram	<b>A-EE7335A-GE</b>

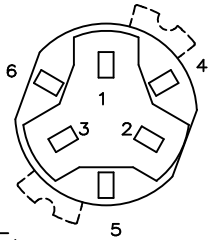
This is an uncontrolled document once printed or downloaded and is subject to change without notice. Date Created: 06/29/2018



DASH	(C)	BS			
631	13.44	4.15			
681	13.94	4.65			
731	14.44	5.15			
781	14.94	5.65			
831	15.44	6.15			
881	15.94	6.65			
931	16.44	7.15			
981	16.94	7.65			

				TOLERANCES UNLESS SPECIFIED		REGAL-BELOIT CORPORATION		DRAWING LIST 11-30-04	
				DEC.	INCHES	REGAL-BELOIT CORPORATION		CHK	ML 01-12-05
4	COND. BOX INSTALLED VIEW UPDATED PER ECR-0044571	UD	10/15/13	ST	.X	±.1	 TITLE OUTLINE 56 FR. - EXP. PR. - TEFC - 1φ & 3φ MAT'L. FINISH	APPD	DRN 01-13-05
3	REVISED C'BOX PER CN40784A	JJB	02/23/2007	ML	.XX	±.03		SCALE	1=2
2	CHANGED LOGO TO REGAL BELOIT	TAT	09-07-2005	ML	.XXX	±.005		REF	
1	ADD GE TO PART NO	MJK	12/20/2004		.XXXX	±.0005		FMF	
NO.	REVISION	BY & DATE		CHK	ANG	±7'30"	FINISH	PREV	
THIS DRAWING IN DESIGN AND DETAIL IS OUR PROPERTY AND MUST NOT BE USED EXCEPT IN CONNECTION WITH OUR WORK ALL RIGHTS OF DESIGN AND INVENTION ARE RESERVED THIS IS AN ELECTRONICALLY GENERATED DOCUMENT - DO NOT SCALE THIS PRINT				RFP	CAD FILE 104189ge			SIZE	DRAWING NO. PAGE OF REV.
				DIST	WP			B	104189GE 4

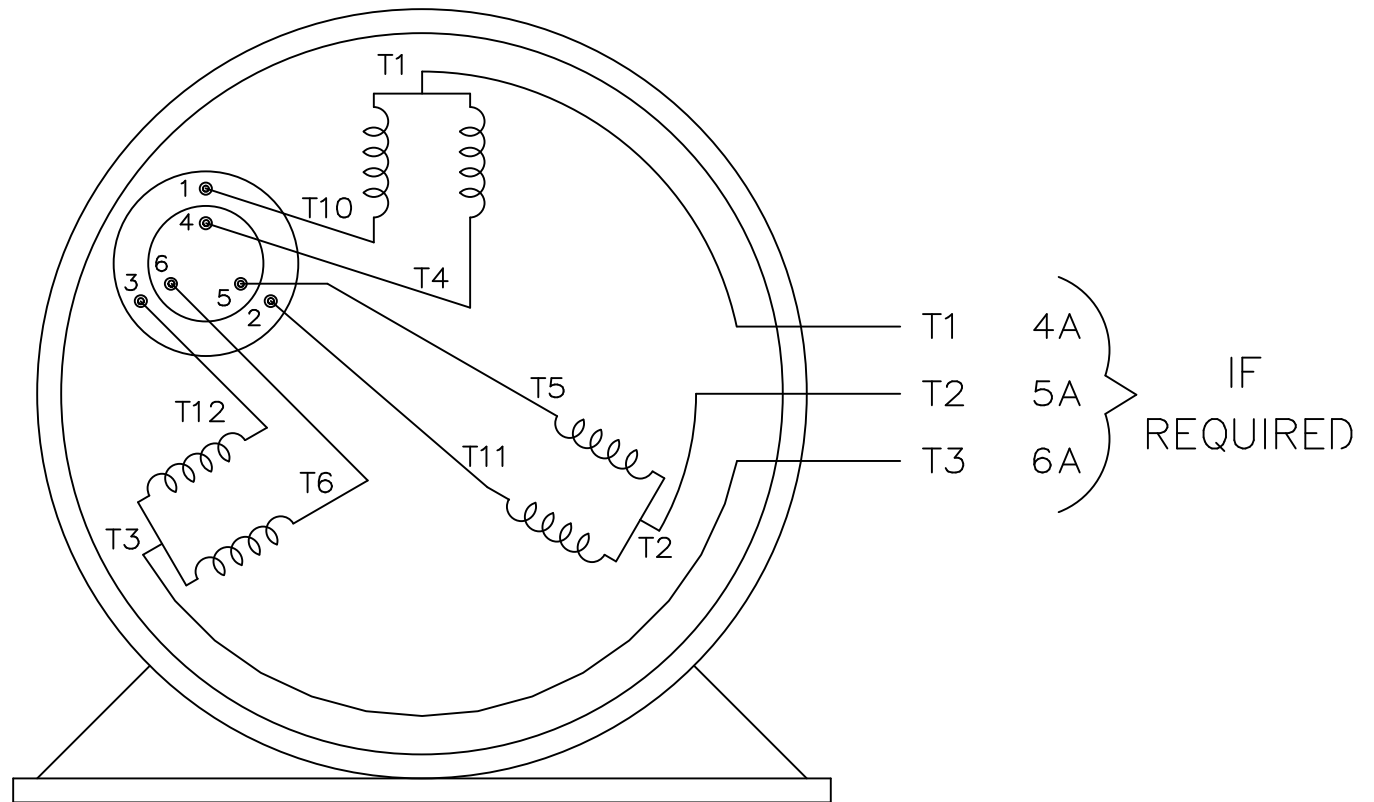
SINGLE VOLTAGE – THREE PHASE WITH OVERLOAD PROTECTOR



NOTE:  
ACTUAL PROTECTORS  
TERMINAL LOCATIONS  
FOR LEAD CONNECTIONS


NOTE:  
WEST PLAINS

LEADS WITH TERMINALS  
SHOULD BE CONNECTED  
TO INBOARD SIDE OF  
TERMINAL BOARD.



VIEW OF TERMINAL END

TO REVERSE ROTATION:  
INTERCHANGE ANY TWO LINE  
LEAD CONNECTIONS.

				TOLERANCES UNLESS SPECIFIED			DRAWN DA 03-26-1993			
				DEC.	INCHES		CHK ML 03-26-1993			
8	ADDED 4A, 5A & 6A "IF REQUIRED" MU80422	RJW 07-10-2007	ML	.X	± -	TITLE CONNECTION DIAGRAM SINGLE VOLT – 3Ø W/OVERLOAD PROT.	APPD GK 03-26-1993	SCALE 1=1		
7	ADDED TERM. BOARD CONNECTION NOTE CN 19219	SMC 10-13-1994		.XX	± -		REF			
6	ADDED ACTUAL PROTECTOR VIEW CN 17481	KL 05-18-1994		.XXX	± -		FMF			
5	REDRAWN – NO CHANGE	DA 03-29-1993		.XXXX	± -		PREV			
NO.	REVISION	BY & DATE	CHK	ANG	± -		FINISH			
THIS DRAWING IN DESIGN AND DETAIL IS OUR PROPERTY AND MUST NOT BE USED EXCEPT IN CONNECTION WITH OUR WORK ALL RIGHTS OF DESIGN AND INVENTION ARE RESERVED THIS IS AN ELECTRONICALLY GENERATED DOCUMENT – DO NOT SCALE THIS PRINT				RFP	CAD FILE ee7335a		SIZE A	DRAWING NO. EE7335A	PAGE OF 8	REV. 8
				DIST LB-WP						



Data Sheet

5K49JN4592



Submital  
Data @ 200 V

Date: 6/20/2017

Customer:   
Attention:   
Submitted by: FAREEDA DUDEKULA

Motor Load Data

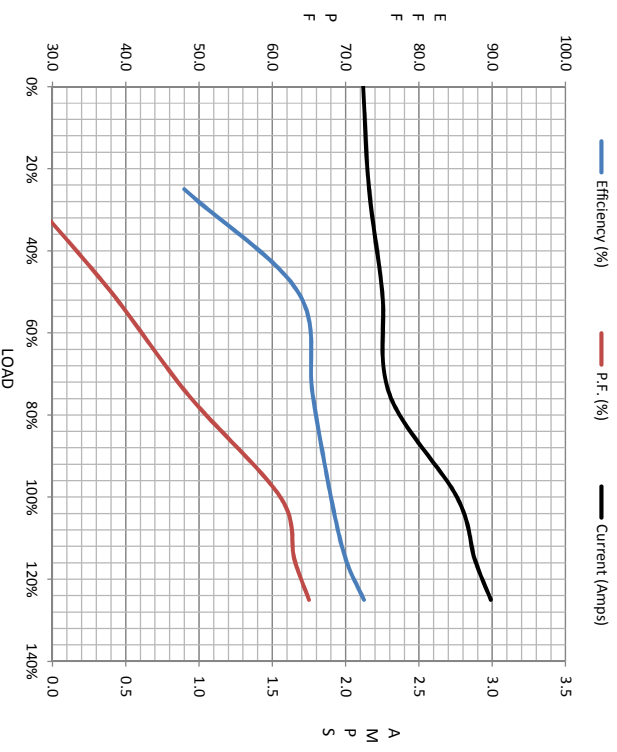
Load	0%	25%	50%	75%	100%	115%	125%	LR
Current (Amps)	2.12	2.16	2.25	2.30	2.76	2.88	2.99	16.1
Torque (ft-lb)	0.00	0.37	0.74	1.10	1.50	1.80	2.00	6.2
RPM	1800	1785	1775	1750	1725	1,722	1720	0
Efficiency (%)		48.0	63.5	65.5	68.0	70.0	72.5	
P.F. (%)	14.0	26.0	38.0	48.5	61.1	63.0	65.0	82.0

Motor Speed Data

	LR	Pull-Up	BD	Rated	Idle
Speed (rpm)	0	500	1150	1725	1800
Current (Amps)	16.1	15.0	11.0	2.76	2.12
Torque (ft-lb)	6.2	6.2	7.2	1.50	0.00

Information Block

HP	0.5			
Sync. RPM	1800			
Frame	56			
Enclosure	EPC			
Construction	TFR			
Voltage	200 V			
Frequency	60 HZ			
Design	B			
LR Code letter	M			
Service Factor	1.15			
Temp Rise @ FL	45 °C			
Duty	CONT			
Ambient	40 °C			
Elevation	1,000 feet			
Rotor/Shaft wkt	0.05 Lb-Fe			
Ret Wdg	Z1408 R8			
Sound Pressure @ 1M	62 dbA			
VFD Rating	NONE			
Outline Dwg	B-104189GE-881			
Conn. Diag	A-EE7335A-GE			
Additional Specifications:				
0				
EQUIV CKT (OHMS/ PHASE)				
R1	R2	X1	X2	Xm
0.0000	0.0000	0.0000	0.0000	0.0000



Speed -Torque Curve

