

PRODUCT INFORMATION PACKET

Model No: 184TCDW7617
Catalog No: Z306A
7,3505/3475,DPAO,184TZ,1/60/60/230#230
Crop Dryer



Regal and Marathon are trademarks of Regal Beloit Corporation or one of its affiliated companies.
©2018 Regal Beloit Corporation, All Rights Reserved. MC017097E

Nameplate Specifications

Output HP	7 Hp	Output KW	5.2 kW
Frequency	60 Hz	Voltage	230 V
Current	36.5 A	Speed	3505 rpm
Service Factor	1.3	Phase	1
Efficiency	75.5 %	Duty	Continuous
Insulation Class	F	Design Code	NO DESIGN CODE
KVA Code	F	Frame	184TZ
Enclosure	Drip Proof Air Over	Overload Protector	No
Ambient Temperature	40 °C	Drive End Bearing Size	6206
Opp Drive End Bearing Size	6205	UL	Recognized
CSA	Y	CE	N
IP Code	22		

Technical Specifications

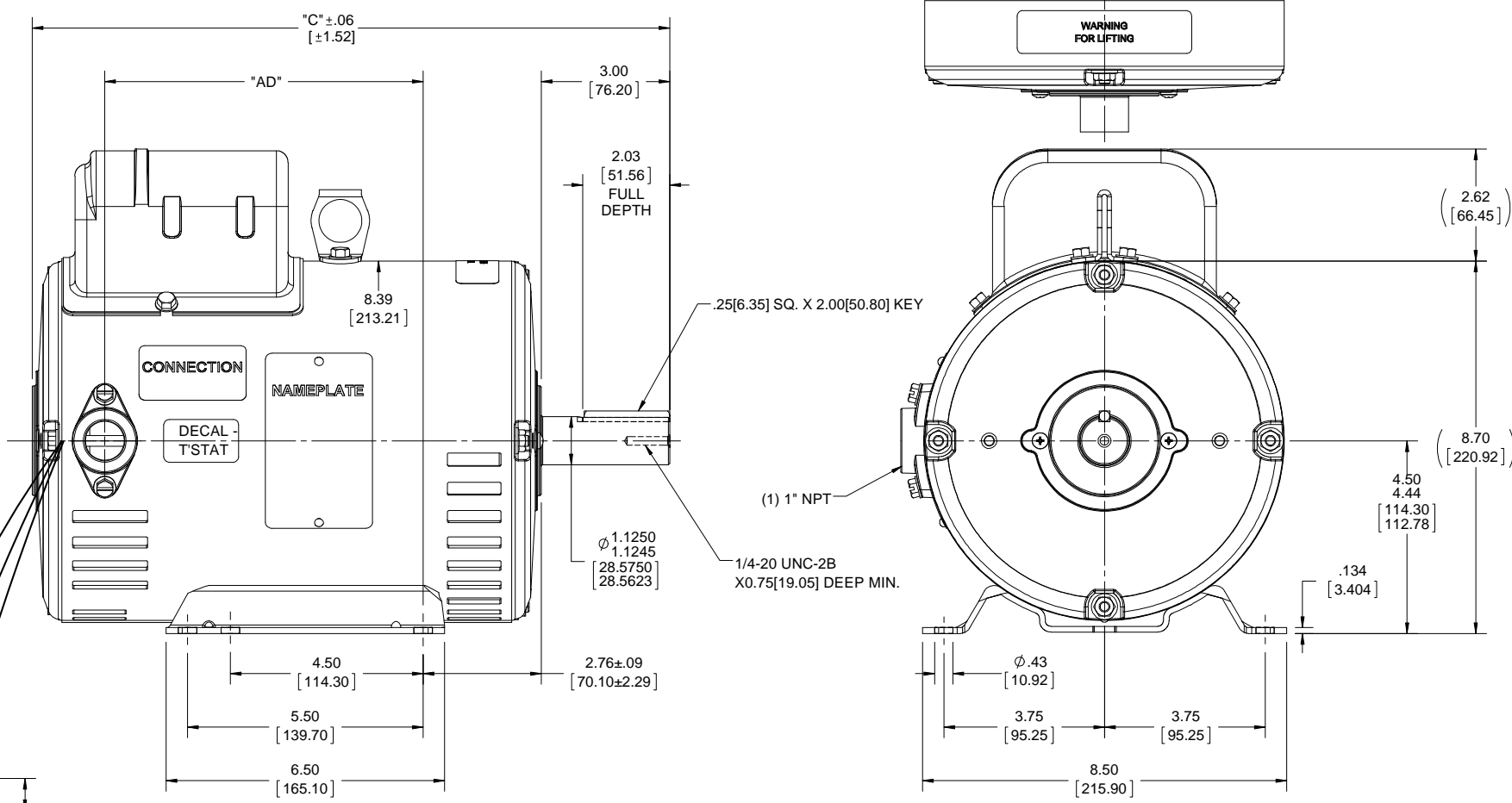
Electrical Type	Capacitor Start Induction Run	Starting Method	Across The Line
Poles	2	Rotation	Selective Counterclockwise
Mounting	Rigid base	Motor Orientation	Horizontal
Drive End Bearing	Ball	Opp Drive End Bearing	Ball
Frame Material	Rolled Steel	Shaft Type	Single Special Extension
Overall Length	14.88 in	Frame Length	10.50 in
Shaft Diameter	1.125 in	Shaft Extension	3 in
Assembly/Box Mounting	F1 Only		
Outline Drawing	035613-1050	Connection Diagram	005033.09ME

B

B

A

A



.75 [19.05]
SEE MODEL FOR LEAD LENGTH

DASH NO.	"C"	"AD"
950	13.88[352.55]	6.43[163.32]
1000	14.38[365.25]	6.93[176.02]
1050	14.88[377.95]	7.43[188.72]
1100	15.38[390.65]	7.93[201.42]
1150	15.88[403.35]	8.43[214.12]
1200	16.38[416.05]	8.93[226.82]
1250	16.88[428.75]	9.43[239.52]

DRAWING REVISION F	REVISION BY A. KEETHA	DATE 12/22/2017
ECO ECO-0144874	APPROVED BY ST	DATE 05/14/2018
ECO DESCRIPTION OUTLINE CONVERSION PROJECT		
<small>COPYRIGHT REGAL BELOIT AMERICA, INC. ALL RIGHTS RESERVED. PROPRIETARY AND CONFIDENTIAL INFORMATION - THIS DOCUMENT IS THE PROPERTY OF REGAL BELOIT AMERICA, INC. (OWNER) AND CONTAINS OWNERS PROPRIETARY INFORMATION. ANY PERSON, CORPORATION OR OTHER FIRM RECEIVING IT IS DEEMED, BY RECEIVING IT, TO AGREE THAT IT, AND/OR ANY PART OF IT, SHALL NOT BE DISCLOSED TO ANY PERSON, CORPORATION OR OTHER ENTITY, DUPLICATED, AND/OR USED, EXCEPT AS EXPRESSLY APPROVED IN WRITING IN ADVANCE BY OWNER. THIS DOCUMENT SHALL BE RETURNED TO OWNER UPON REQUEST. IT MAY BE SUBJECT TO CERTAIN RESTRICTIONS UNDER APPLICABLE EXPORT CONTROL LAWS AND REGULATIONS.</small>		

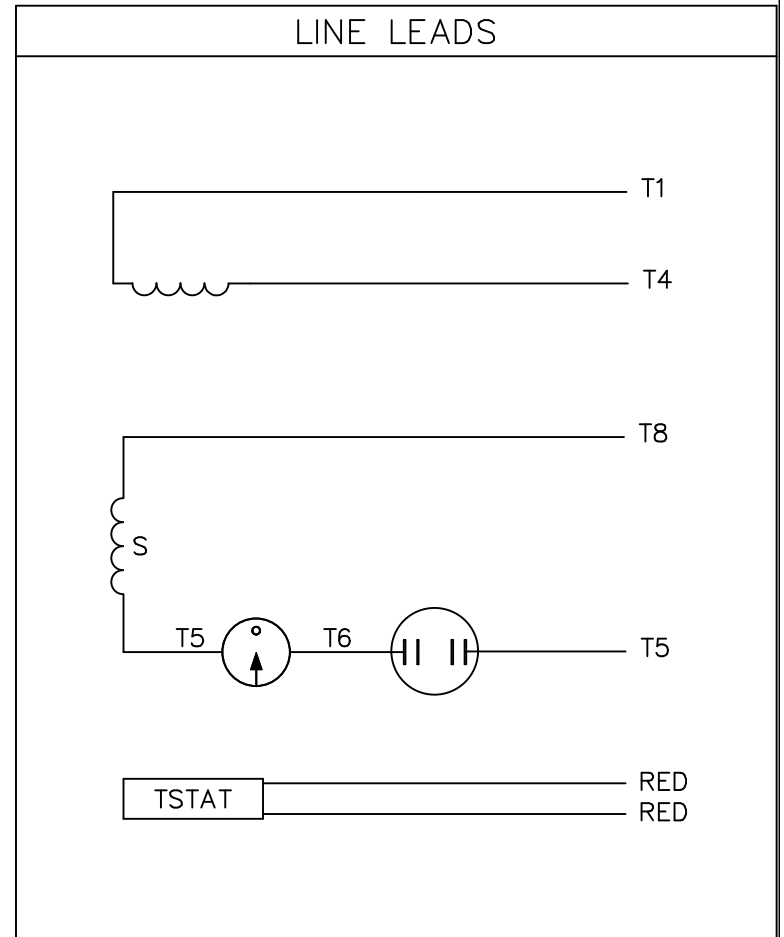
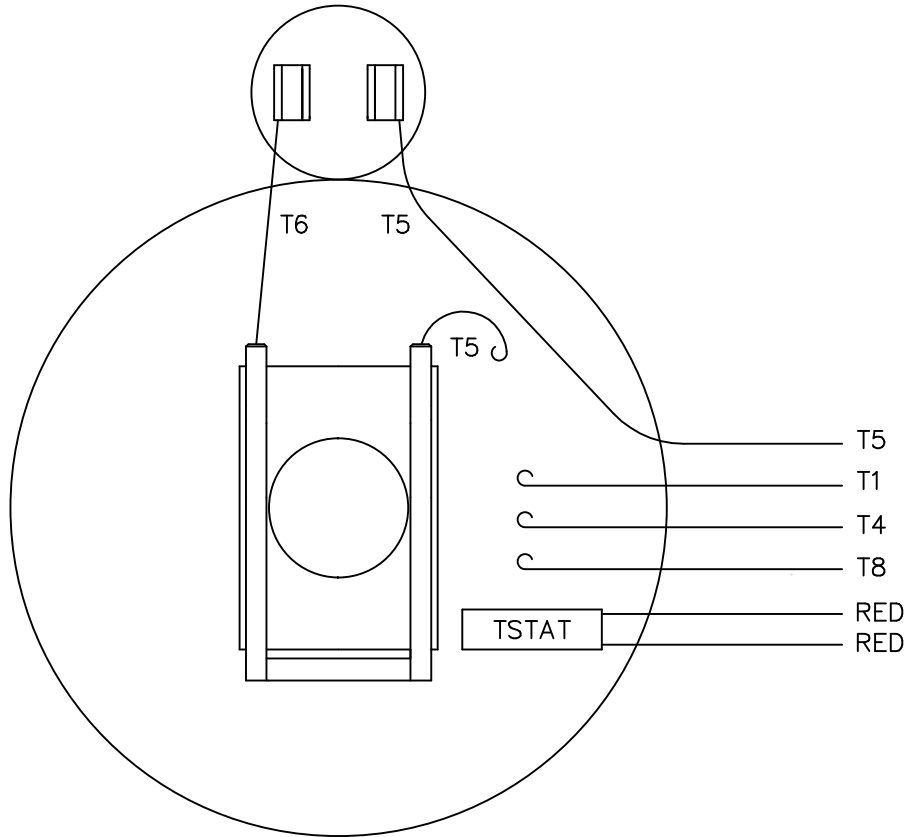
TOLERANCES UNLESS OTHERWISE SPECIFIED:			
DEC.	INCH	mm	ANGLE
.X	+0.1	[+2.5]	±0.5°
.XX	+0.03	[+0.76]	
.XXX	+0.005	[+0.127]	
.XXXX	+0.0005	[+0.0127]	
REMOVE BURRS & BREAK SHARP			
EDGES: .003/.015 [076/.381] X 45°			
CORNER FILLETS: R.02 [51]			
MACHINED SURFACES: 125/3.2			
mm SHOWN IN [BRACKETS]		INCH	

DRAWN BY KVN	DATE 01/23/2007
APPROVED BY	DATE
REFERENCE	THIRD ANGLE PROJECTION

Regal Beloit America, Inc.	
DESCRIPTION	OUTLINE 184T FRAME DRIP PROOF - RIGID MOUNT
MATERIAL	PROCESS/FINISH
SIZE B	DRAWING NUMBER 035613
SHEET 1 OF 1	

NOTES:
1. GASKETS THROUGHOUT

VIEW FROM OUTSIDE OF MOTOR AT SWITCH END.



ROTATION FACING LEAD END	L1	L2
C.C.W.	T1, T8	T4, T5
C.W.	T1, T5	T4, T8

				TOLERANCES UNLESS SPECIFIED			DRAWN	YS 01/23/08		
				DEC.	INCHES		CHK			
				.X	±.1		APPD			
				.XX	±.01		TITLE	EXTERNAL WIRING DIAGRAM TYPE 'C' W/O PROT		
				.XXX	±.005		SCALE	1=1		
				.XXXX	±.0005	MAT'L.	DECAL - 004018 & 080582			
NO.	REVISION	BY & DATE	CHK	ANG	±1/2"	FINISH	REF	FMF 184TCDW7615		
			RFP	CAD FILE			00503309ME	SIZE	DRAWING NO.	REV.
			DIST				A	00503309ME		

THIS DRAWING IN DESIGN AND DETAIL IS OUR PROPERTY AND MUST NOT BE USED EXCEPT IN CONNECTION WITH OUR WORK ALL RIGHTS OF DESIGN AND INVENTION ARE RESERVED THIS IS AN ELECTRONICALLY GENERATED DOCUMENT - DO NOT SCALE THIS PRINT

CERTIFICATION DATA SHEET

Model#: 184TCDW7617 AA WINDING#: C8218 R1 2
 CONN. DIAGRAM: 005033.09ME ASSEMBLY: F1 ONLY
 OUTLINE: 035613-1050

TYPICAL MOTOR PERFORMANCE DATA

HP	KW	SYNC. RPM	F.L. RPM	FRAME	ENCLOSURE	KVA CODE	DESIGN
7&9	5.20&6.70	3600	3505&3475	184TZ	DPAO	F	NO DESIGN CODE

PH	Hz	VOLTS	FL AMPS	START TYPE	DUTY	INSL	S.F	AMB°C	ELEVATION
1	60/60	230#230	36.5&46	ACROSS THE LINE	CONTINUOUS	F4	1.3/1.0	40	3300

FULL LOAD EFF: 75.5&74	3/4 LOAD EFF: 76.9	1/2 LOAD EFF: 76.9	GTD. EFF	ELEC. TYPE	NO LOAD AMPS
FULL LOAD PF: 81.5&85.5	3/4 LOAD PF: 82.6	1/2 LOAD PF: 73	0	CAP START IND RUN	18.7

F.L. TORQUE	LOCKED ROTOR AMPS	L.R. TORQUE	B.D. TORQUE	F.L. RISE°C
10.5 LB-FT	196.5	24.5 LB-FT 180	26 LB-FT 191	0

SOUND PRESSURE @ 3 FT.	SOUND POWER	ROTOR WK^2	MAX. WK^2	SAFE STALL TIME	STARTS /HOUR	APPROX. MOTOR WGT
71 dBA	81 dBA	0 LB-FT^2	- LB-FT^2	10 SEC.	-	0 LBS.

*** SUPPLEMENTAL INFORMATION ***

DE BRACKET TYPE	ODE BRACKET TYPE	MOUNT TYPE	ORIENTATION	SEVERE DUTY	HAZARDOUS LOCATION	DRIP COVER	SCREENS	PAINT
STANDARD	STANDARD	RIGID	HORIZONTAL	FALSE	NONE	FALSE	NONE	BLUE (ENAMEL)

BEARINGS		GREASE	SHAFT TYPE	SPECIAL DE	SPECIAL ODE	SHAFT MATERIAL	FRAME MATERIAL
DE	OPE						
BALL	BALL	POLYREX EM	SGL SPL EXT	1.125 x 3.00 IN SEK	NONE	AISI 1045 (C-240)	ROLLED STEEL
6206	6205						

THERMO-PROTECTORS				THERMISTORS	CONTROL	SPACE /n HEATERS
THERMOSTATS	PROTECTORS	WDG RTDs	BRG RTDs			
TSTATS (N/C)	NOT	NONE	NONE	NONE	FALSE	NONE VOLTS

If Inverter equals NONE, contact factory for further information

INVERTER TORQUE: NONE
INV. HP SPEED RANGE: NONE
ENCODER: NONE
NONE NONE
NONE NONE PPR
BRAKE: NONE NONE
NONE P/N NONE
NONE NONE
NONE FT-LB NONE V NONE Hz

*
N
O
T
E
S
*

** Subject to change without notice.