

PRODUCT INFORMATION PACKET

Model No: 056T11O5310

Catalog No: X525

Refrigeration Motor, 2 & 1.50 HP, 3 Ph, 60 & 50 Hz, 208-230/460 & 190/380 V, 1200 & 1000 RPM,
56HZ Frame, OAO



Regal and Marathon are trademarks of Regal Rexnord Corporation or one of its affiliated companies.

©2023 Regal Rexnord Corporation, All Rights Reserved. MC017097E

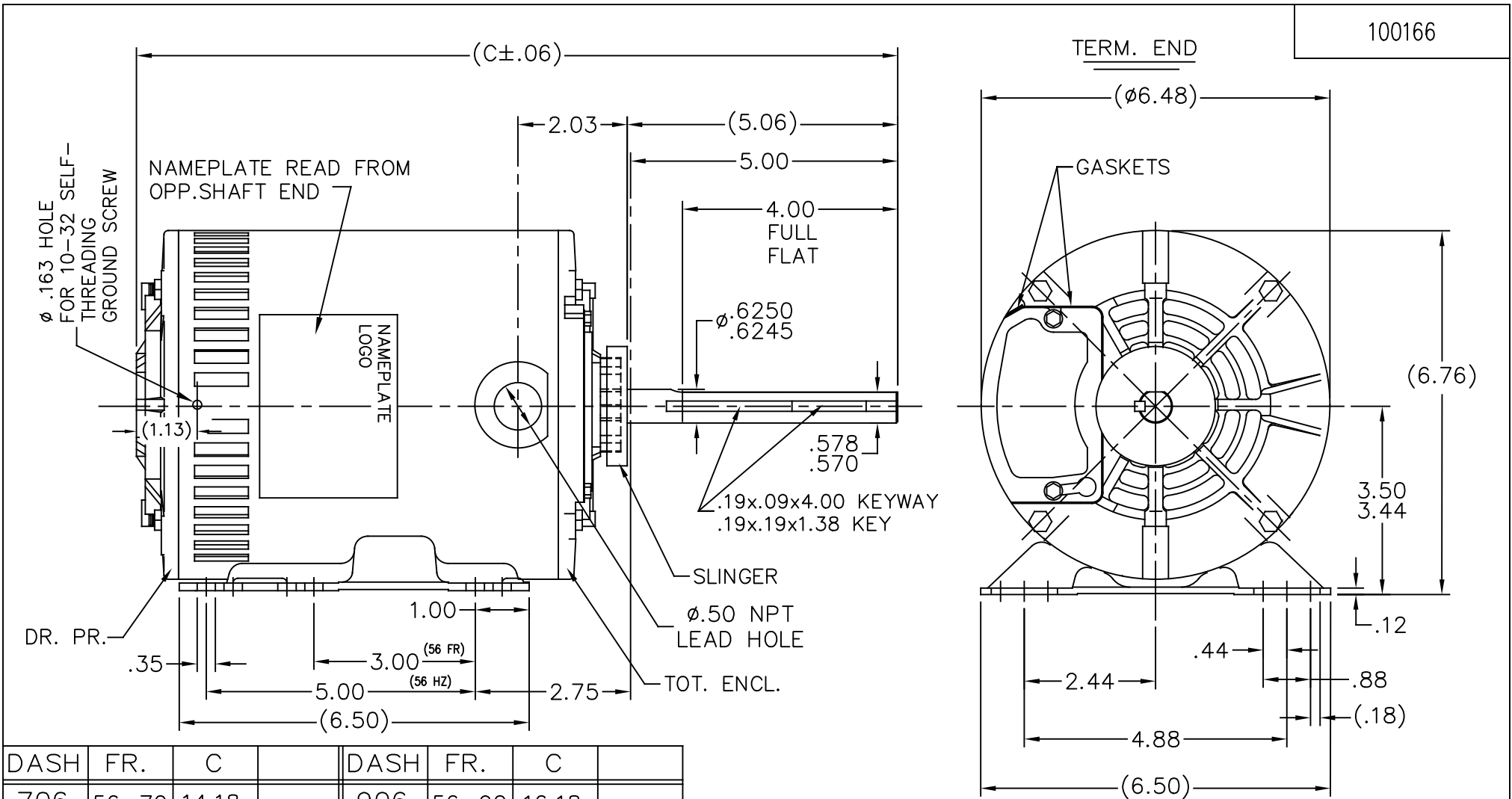


Nameplate Specifications

Phase	3	Output HP	2 & 1.50 Hp
Output KW	1.5 & 1.1 kW	Voltage	208-230/460 & 190/380 V
Speed	1140 & 950 rpm	Service Factor	1.0 & 1.0
Frame	56HZ	Enclosure	Open Air Over
Thermal Protection	Automatic	Efficiency	81.5 & 79 %
Ambient Temperature	70 °C	Frequency	60 & 50 Hz
Current	7.2-6.8/3.4 & 6.6/3.3 A	Power Factor	67
Duty	Continuous	Insulation Class	B
Design Code	NO DESIGN CODE	KVA Code	J
Drive End Bearing Size	6203	Opp Drive End Bearing Size	6203
UL	Recognized (Not Protector)	CSA	Y
CE	N	IP Code	10
Number of Speeds	1		

Technical Specifications

Electrical Type	Squirrel Cage Induction Run	Starting Method	Across The Line
Poles	6	Rotation	Reversible
Resistance Main	9 Ohms	Mounting	Rigid Base
Motor Orientation	Horizontal	Drive End Bearing	Ball
Opp Drive End Bearing	Ball	Frame Material	Rolled Steel
Shaft Type	Single Special Extension	Overall Length	16.68 in
Frame Length	9.56 in	Shaft Diameter	0.625 in
Shaft Extension	5.06 in	Assembly/Box Mounting	F1 ONLY
Outline Drawing	A-100166-956	Connection Drawing	A-102007-1



DASH	FR.	C		DASH	FR.	C	
706	56-70	14.18		906	56-90	16.18	
756	56-75	14.68		956	56-95	16.68	
806	56-80	15.18					
856	56-85	15.68					

				TOLERANCES UNLESS SPECIFIED		MARATHON ELECTRIC	DRAWN MJD 03-27-1998		
				DEC.	INCHES		CHK ML 04-02-1998	APPD GK 04-02-1998	
6	ADDED DASH VALUES	PBS 3/6/2007	NB	.X	±.1	TITLE OUTLINE 56 FR.CONDENSER MOTOR MAT'L.	SCALE 3=8	REF	
5	REVISED FLAT TO 3 PLACE DECIMAL TOLERANCE	TAT 03-14-2005	ML	.XX	±.03		FMF		
4	REDRAWN IN AUTOCAD	TAT 08-03-2004	ML	.XXX	±.005		PREV		
3	REDRAWN ON CADD	MJD 04-02-1998		.XXXX	±.0005				
NO.	REVISION	BY & DATE	CHK	ANG	±7'30"	FINISH			

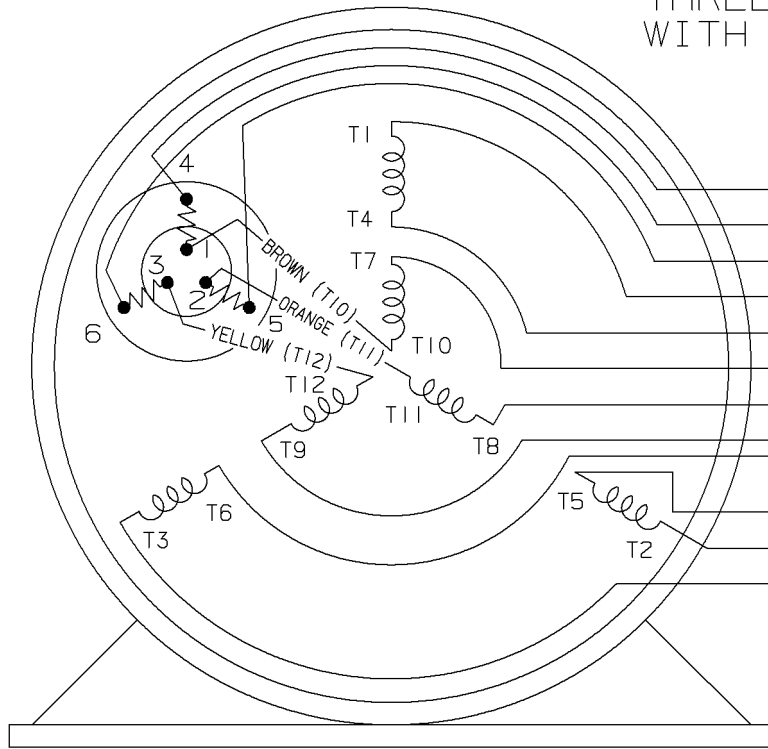
THIS DRAWING IN DESIGN AND DETAIL IS OUR PROPERTY AND MUST NOT BE USED EXCEPT IN CONNECTION WITH OUR WORK ALL RIGHTS OF DESIGN AND INVENTION ARE RESERVED THIS IS AN ELECTRONICALLY GENERATED DOCUMENT - DO NOT SCALE THIS PRINT

RFP
DIST WP

CAD FILE 100166

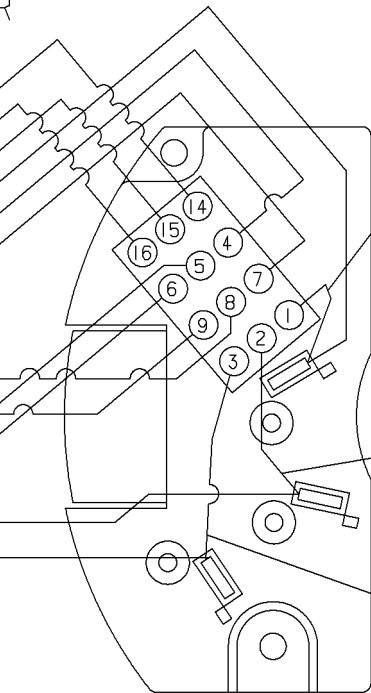
SIZE	DRAWING NO.	PAGE	OF	REV.
A	100166			6

THREE PHASE-DUAL VOLTAGE WITH THERMAL PROTECTOR



VIEW OF TERMINAL END

- (T14) BROWN
- (T16) YELLOW
- (T15) ORANGE
- (T1) RED
- T4
- T7
- T8
- T9
- T6
- T5
- (T2) BLUE
- (T3) BLACK

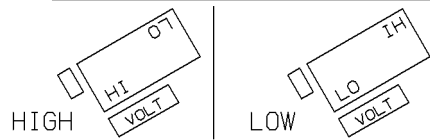


VIEWING BOTTOM OF TERMINAL BOARD

RED
 NUMBERS SHOWN ON TERM BOARD ARE FOR REF. ONLY.
 (NUMBERS DO NOT APPEAR ON PARTS.)

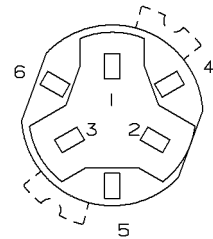
BLUE
 BLACK

TO CHANGE VOLTAGE, PULL PLUG, ROTATE 180° AND REINSERT



CONNECT LINES TO L1, L2 & L3

NOTE:
 ACTUAL PROTECTORS TERMINAL LOCATIONS FOR LEAD CONNECTIONS



4	06-26-1995	1,2,3 WERE SWITCHED WITH 4,5,6 ON THE TERMINAL CN 20644	BR	✓ MAX. SURFACE ROUGHNESS UNLESS NOTED OTHERWISE	UNLESS OTHERWISE SPECIFIED DIMENSIONS ARE IN INCHES TOL. ON XX±.02 XXX±.005 XXXX±.0005 ANGLES± 7°30"			
3	05-18-1994	ADDED ACTUAL PROTECTOR VIEW CN 17481	KL	MATL SPEC				DRAWN BY RM 07-20-1993
2	07-20-1993	REDRAWN ON CADD, ORIGINAL LOST. REV. VCD TO COLORED LEADS CNI3741	RM	FINISH				CHKD BY ET 07-20-1993
REV	DATE	CHANGE	NAME	REFERENCE DRW.	WAUSAU, WISCONSIN 54401			
				PART NAME CONNECTION DIAGRAM 3Ø - DUAL VOLTAGE MOTOR	DRWG NO A- 102007-1			

SHOP BOOK

PURCHASED

DISTRIBUTION - WA - LB - WP - LM - BR

CADD FILE NO.

102007-1

CERTIFICATION DATA SHEET

Model#: 56T1105310 E **WINDING#:** ZT600 R1 3
CONN. DIAGRAM: A-102007-1 **ASSEMBLY:** F1 ONLY
OUTLINE: A-100166-956

TYPICAL MOTOR PERFORMANCE DATA

HP	KW	SYNC. RPM	F.L. RPM	FRAME	ENCLOSURE	KVA CODE	DESIGN
2&1 1/2	1.49&1.12	1200	1140&950	56HZ	OPAO	J	NO DESIGN CODE

PH	Hz	VOLTS	FL AMPS	START TYPE	DUTY	INSL	S.F	AMB°C	ELEVATION
3	60/50	208-230/460#190/380	7.2-6.8/3.4&6.6/3.3	ACROSS THE LINE	CONTINUOUS	B3	1.0/1.0	70	3300

FULL LOAD EFF: 81.5&79	3/4 LOAD EFF: 79	1/2 LOAD EFF: 77.5	GTD. EFF	ELEC. TYPE	NO LOAD AMPS
FULL LOAD PF: 67&63.8	3/4 LOAD PF: 58	1/2 LOAD PF: 45	78.5	SQ CAGE IND RUN	4.8 / 2.4

F.L. TORQUE	LOCKED ROTOR AMPS	L.R. TORQUE	B.D. TORQUE	F.L. RISE°C
9.1 LB-FT	39.6 / 19.8	25.6 LB-FT 281	29.5 LB-FT 324	999

SOUND PRESSURE @ 3 FT.	SOUND POWER	ROTOR WK^2	MAX. WK^2	SAFE STALL TIME	STARTS /HOUR	APPROX. MOTOR WGT
0 dBA	10 dBA	0.14 LB-FT^2	35 LB-FT^2	15 SEC.	2	48 LBS.

***** SUPPLEMENTAL INFORMATION *****

DE BRACKET TYPE	ODE BRACKET TYPE	MOUNT TYPE	ORIENTATION	SEVERE DUTY	HAZARDOUS LOCATION	DRIP COVER	SCREENS	PAINT
STANDARD	STANDARD	RIGID	HORIZONTAL	FALSE	NONE	FALSE	NONE	GRAY (POWDER)

BEARINGS		GREASE	SHAFT TYPE	SPECIAL DE	SPECIAL ODE	SHAFT MATERIAL	FRAME MATERIAL
DE	OPE						
BALL	BALL	DC 44M	SGL SPL EXT	0.625 x 5.00 IN SEKF WITH 4.00 IN FULL FLAT	NONE	1144 STRESSPROOF (C-223)	ROLLED STEEL
6203	6203						

THERMO-PROTECTORS				THERMISTORS	CONTROL	SPACE /n HEATERS
THERMOSTATS	PROTECTORS	WDG RTDs	BRG RTDs			
NONE	AUTOMATIC	NONE	NONE	NONE	FALSE	NONE VOLTS

If Inverter equals NONE, contact factory for further information

*
N
O
T
E
S
*

INVERTER TORQUE: NONE
INV. HP SPEED RANGE: NONE
ENCODER: NONE
NONE NONE
NONE NONE PPR
BRAKE: NONE NONE
NONE P/N NONE
NONE NONE
NONE FT-LB NONE V NONE Hz

DATE: 06/28/2017 03:00:19 AM

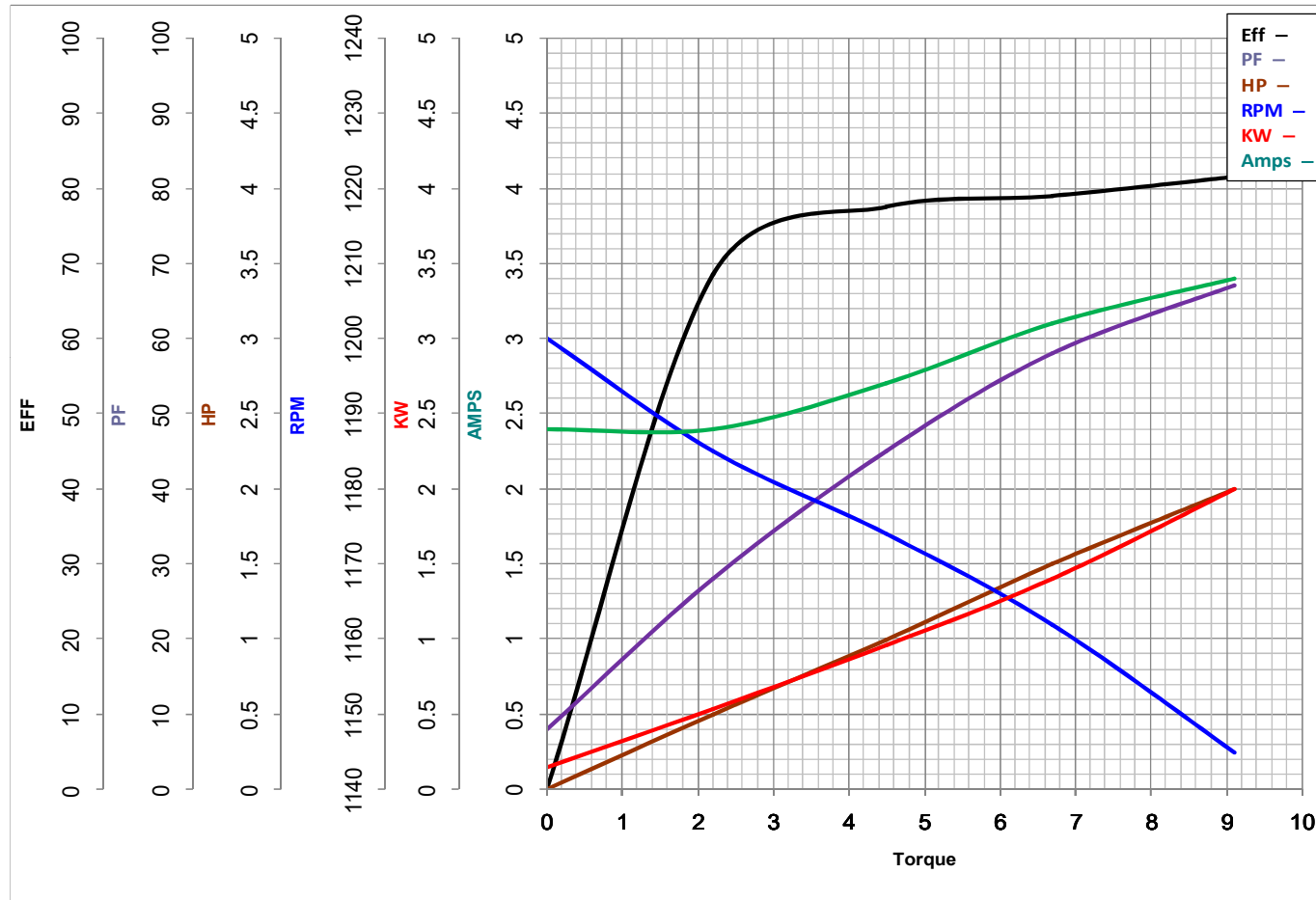
FORM 3531 REV.3 02/07/99

** Subject to change without notice.



MARATHON ELECTRIC CORPORATION
TYPICAL PERFORMANCE CURVE for AC MOTOR

Customer _____ Curve at 460 Volts HP 2&1.5 PHASE 3
 Model No 56T1105310 60 HZ
2 HP VOLTS 208-230/460&190/380
 Catalog No X525 HZ 60&50 RPM 1140&950



			Torque in Lb.Ft		
FL TORQUE	<u>9.1</u>	Lb.Ft	FL AMPS	<u>7.2-6.8/3.4</u>	
BD TORQUE	<u>29.5</u>	Lb.Ft	PU TORQUE	<u>26.0</u> Lb.Ft	
LR TORQUE	<u>25.6</u>	Lb.Ft	LR AMPS	<u>19.8</u>	
WINDING	<u>ZT600-3</u>		Date	<u>1/23/2019</u>	