

PRODUCT INFORMATION PACKET

Model No: 056E17F2010

Catalog No: Z668

Replaced by 108322.00 once inventory depleted - 1,1800,TEFC,56C,DC/12
Low Voltage Motors



Regal and Marathon are trademarks of Regal Rexnord Corporation or one of its affiliated companies.
©2021 Regal Rexnord Corporation, All Rights Reserved. MC017097E



Nameplate Specifications

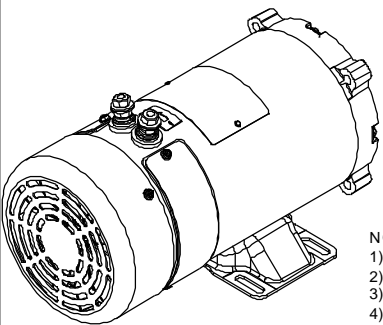
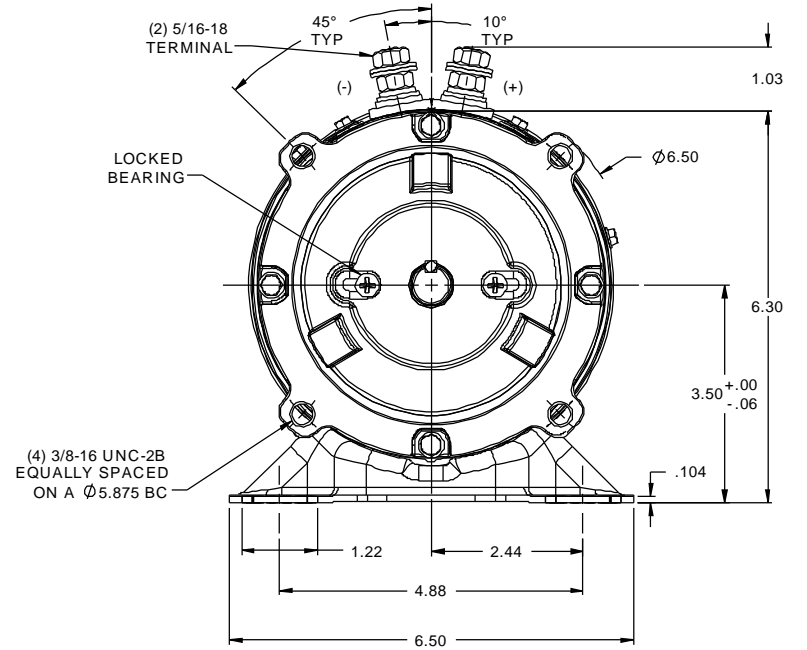
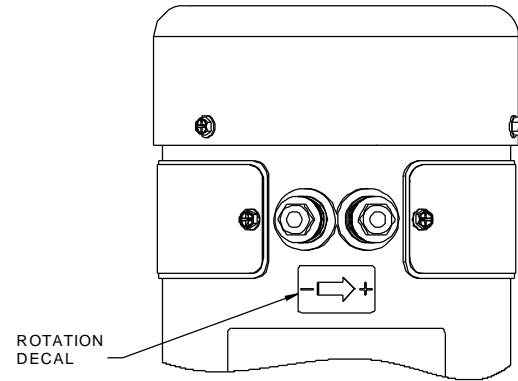
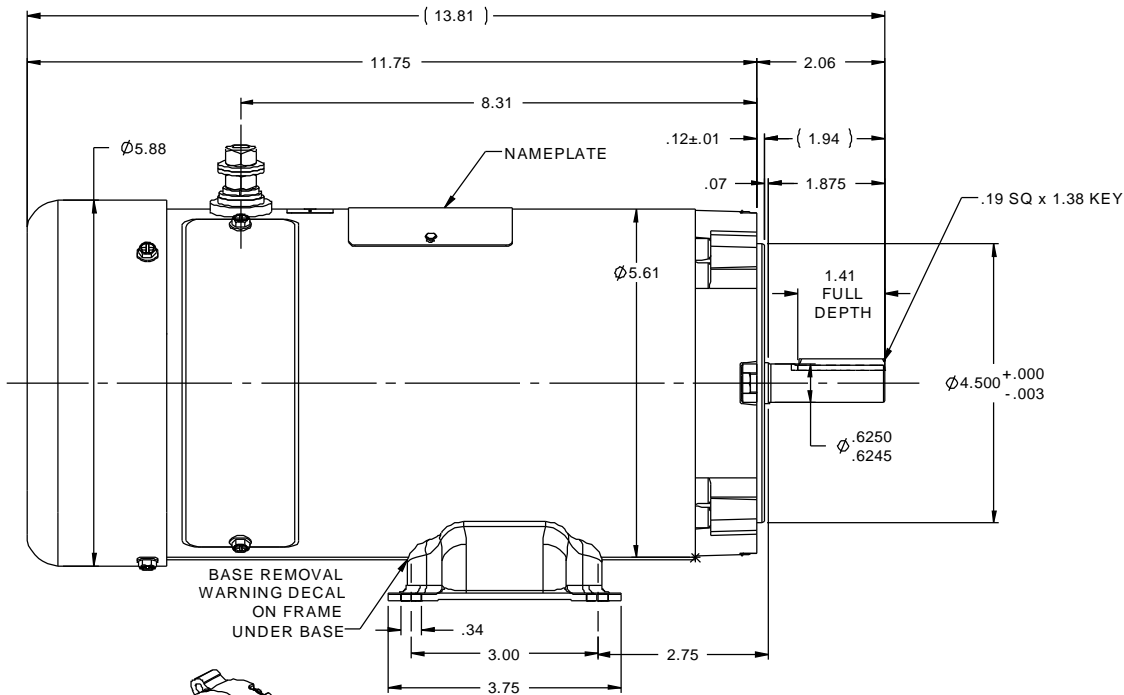
Output HP	1 Hp	Output KW	0.75 kW
Voltage	12 V	Current	80.0 A
Speed	1800 rpm	Service Factor	1
Efficiency	77.9 %	Duty	Continuous
Insulation Class	F	Frame	XS56C
Enclosure	Totally Enclosed Fan Cooled	Thermal Protection	No
Ambient Temperature	40 °C	Drive End Bearing Size	6203
Opp Drive End Bearing Size	6203	UL	Recognized
CSA	Y	CE	N
Number of Speeds	1		

Technical Specifications

Rotation	Reversible	Mounting	Rigid C base
Overall Length	13.81 in	Frame Length	8.50 in
Shaft Diameter	0.625 in	Shaft Extension	1.94 in
Torque	35 LB-IN		
Outline Drawing	031671-850	Connection Drawing	00531901

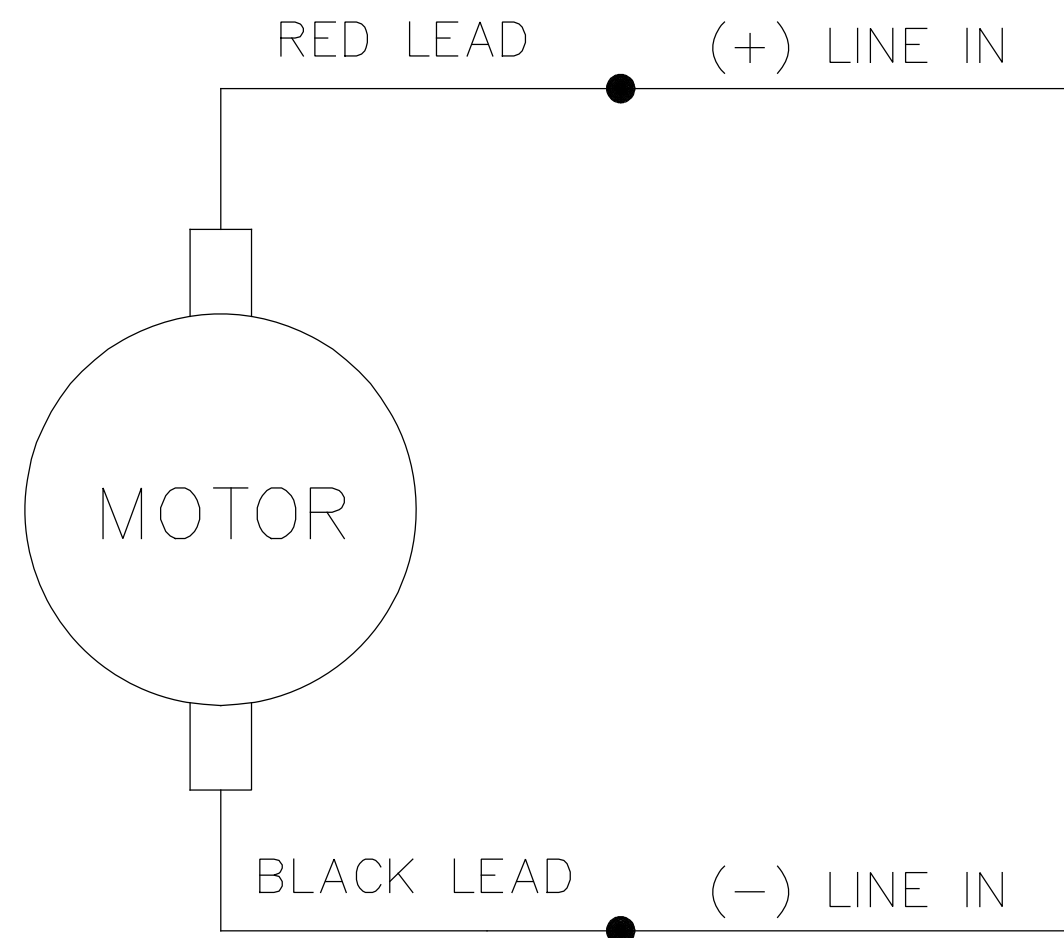
This is an uncontrolled document once printed or downloaded and is subject to change without notice. Date Created:10/11/2021

RBC PROPRIETARY AND CONFIDENTIAL INFORMATION
 This document is the property of REGAL BELOIT CORPORATION ("RBC") including its subsidiaries and divisions and contains proprietary information of RBC. This document is loaned on the express condition that neither the information contained therein shall be disclosed to others without the express written consent of RBC, and that the information shall be used by the recipient only as approved expressly by RBC. This document shall be returned to RBC upon its request. This document may be subject to certain restrictions under U.S. export control laws and regulations.

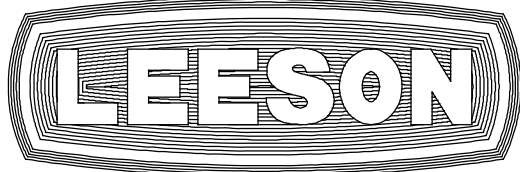


- NOTES:
 1) MAXIMUM FACE RUNOUT .004 T.I.R.
 2) MAXIMUM PILOT ECCENTRICITY .004 T.I.R.
 3) PERMISSIBLE SHAFT RUNOUT .002 T.I.R.
 4) GASKETS THROUGHOUT.

				TOLERANCES UNLESS SPECIFIED		marathon [®] electric		DRAWN RPB 2/22/02		
				DEC INCHES				CHK		
				X	±.1			APPR BC 2/22/02		
02	ADDED EXTRA VIEW PER MFG REQUEST	JJM 9/16/2013		XX	±.03	TITLE	OUTLINE	SCALE 1:2		
--	REDRAWN IN SOLIDWORKS	IPG 9/9/2011		XXX	±.005		48 FRAME DC	REF 031188		
01	RELOCATED FAN GUARD SCREWS, ECR 76120	BPW 4/24/02		SAD	±.0005	MATL		FMF 108994.00		
NO	REVISION	BY & DATE		CHK	ANG ±1/2°	FINISH		PAGE OF		
THIRD ANGLE PROJECTION				RFP		PREV		SIZE	DRAWING NO	REV
				NETWORK FILE NAME 031671				B	031671	02



CONNECTIONS SHOWN FOR CCW ROTATION FACING LEAD END OF THE MOTOR
 TO REVERSE ROTATION INTERCHANGE LINE LEADS

			TOLERANCES UNLESS SPECIFIED		 ELECTRIC MOTORS GEARMOTORS AND DRIVES	DRAWN TJF 11/15/97			
			DEC.	INCHES		CHK			
			.X	±.1		APPD	POW 11/15/97		
E	"MOTOR" WAS "ARMATURE", ECO-0163602	IPG 3/14/19	.XX	±.01	TITLE	EXTERNAL WIRING DIAGRAM			
D	UPDATED TO MAKE IT GENERIC, ECO-0163547	IPG 3/13/19	.XXX	±.005		SCALE 1=2			
01	REDRAWN ON CAD. REVISED NOTES.	SJB 9/20/2005	.XXXX	±.0005	MAT'L.	REF			
NO.	REVISION	BY & DATE	CHK	ANG	±1/2°	FINISH	FMF		
THIS DRAWING IN DESIGN AND DETAIL IS OUR PROPERTY AND MUST NOT BE USED EXCEPT IN CONNECTION WITH OUR WORK ALL RIGHTS OF DESIGN AND INVENTION ARE RESERVED THIS IS AN ELECTRONICALLY GENERATED DOCUMENT - DO NOT SCALE THIS PRINT			RFP	CAD FILE		00531901	SIZE	DRAWING NO.	REV.
			DIST				A	005319.01	E